



UNIQUE

PERFECT PRODUCTIONS PVT LTD

Excavator Attachments

Buckets, Forks, Arms, Couplers, Brush Cutters, Heavy Duty Fabs and more.

Seamless Global Sourcing

Sit back, relax, and receive top-quality parts through rigorous quality management.

Steel & SGI Castings

10 kgs to 700 Kgs. Quick Couplers, GETs, and more large castings.

Contract Manufacturing

Let us handle the production complexities; you focus on success with high-quality results

ABOUT US

Established in **1998**, **Unique Perfect Productions Pvt Ltd** (UPPPL) is the product of a collaborative effort between **Unique Power Perfect** and **Unique Equipments**. Originating as an Excavator Buckets Manufacturer in the state of Rajasthan, India, our company has evolved into a specialist in providing a high-quality excavator buckets and attachments through years of invaluable experience.

Unique specializes in customization to ensure the **best fit** on the OEM excavator as well as meeting the customer's requirements. Customers can choose between Heavy Duty and General-Purpose buckets depending on their application requirements. A wide selection of widths and capacities allows them to **maximize productivity and efficiency**. Customers can even select their tooth option based on ground condition or preference.

Today, Unique offers **Excavator Attachments, Steel Castings, GETs, Pins and Bushes**. Our Unique Pins and Bushes compete with OEM attached counterparts. Additionally, to our Local Customers, we offer services to Excavators and their attachments. By manufacturing every bucket, castings pins, and bushes in-house we maintain strict oversight to ensure the quality and durability for which **Unique** is known. Our objective is to provide our clients with an **"I am assured"** experience when we are chosen for the service. Our emphasis on clear communication and follow-through procedures ensures that the client's objective is top priority.

OUR MANUFACTURING PRODUCT RANGE

Excavator Buckets

- Shovel Buckets
- Backhoe Buckets
- Loader Buckets
- LHD Buckets
- Net Buckets
- Reclaimer Buckets
- Rotary Buckets
- Tilt Buckets
- Ripper Teeth
and many more

Excavator Attachments

- Pallet Forks
- Log Splitters
- Brush Cutters
- Booms and Arms
- G.E.Ts (Teeth Adapters)
and many more

Other Manufacturing

- Pins and Bushes
- Machined Parts
- Steel Castings
- SGI Castings

Heavy Duty Fabs

- Mining Pressure Doors
- Door Board Regulators
- Dumper Bodies

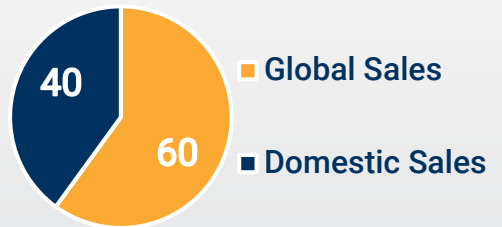
“Quality is not an act. It is a habit.”

-Aristotle

UNIQUE stands as a versatile and reliable partner for industries involved in:

- ✓ Excavation
- ✓ Mining
- ✓ Defense
- ✓ Aerospace
- ✓ Telecommunication

Market Distribution



UNIQUE TIMELINE

2000-2007

Supplier To
Larsen & Toubro Komatsu

2001-2011

Supplier To
EWAC Alloys Limited (Zupertrod)

2007-2009

Supplier To
JCB

2009-2011

Supplier To
Volvo Construction Equipment

2011

Focused Towards
End Consumer Market

2017

Started Manufacturing
Excavator Pins and Bushes

2020

Established
Steel Foundry

UNIQUE INFRASTRUCTURE



Total Acreage:

Covering **23 Acres / 1 million sq.ft.**, our expansive facility provides ample space for seamless workflow and future expansion.

Comprising **8 buildings**, our facility boasts a total shed area of **70,000 sq.ft.**, with an in-use area of **300,000 sq.ft.**

Specializations

Complete Specializations and Facilities

- Fabrication
- Machining
- Line Boring
- Thread Rolling
- Welding
 - MIG (GMAW)
 - Stick (SMAW)
 - Special Purpose Machines (SPM)
 - Robot (GMAW)
- Oxy Fuel Cutting
- Plasma Cutting
- Press Brakes
- Shot Blasting
- Sand Blasting
- Grinding
- Induction Hardening
- Quenching
- Tempering
- Powder Coating
- Painting
- Electroplating
 - Hard Chrome
 - Thin Dense Chrome
 - Zinc
 - Nickel
 - E-Coat and others
- Electroless Plating
 - High/Low Phosphorous Nickel
 - Black Oxide
 - Phosphate and others
- Hot Dip Galvanizing
- Steel Cold Box CO2 Castings
- Steel Shell Castings
- SGI Cold Box CO2 Castings
- Complete Quality Testing
- **Missing what you need? Let's connect!**



UNIQUE IN-HOUSE MACHINES

- Press Brake Machines
- CNC Turning Machines
- VMC Machines
- All Geared Lathe Machines
- Heavy Radial Machines
- Heavy Power Presses
- Double Cylinder Power Presses
- Horizontal Power Press Link Machines
- Radial Drill Machines
- Horizontal Deep Hole Drill Machines
- Line Boring Machines
- 600A MIG Welding Machines
- TIG Machines
- Robotic Welding
- Hand Grinders
- Cylindrical Grinders
- Centreless Grinders
- Gas Cutters
- Pug Cutters
- Profile Cutters
- Plasma/Oxy Cutting Machines
- EOT Cranes
- Mobile Cranes
- Bandsaw Machines
- Centre and Facing Machines
- Induction Hardening Machines
- Chemical Plant – (Hard Chrome, Thin Dense Chrome, Zinc plating, Electroless Nickel Plating, Manganese Coating, Phosphate Coating)
- Hot Dip Galvanizing Plants
- Rotary Compressors
- Screw Compressors
- Muffle Furnaces
- Rectifier 600A
- CNC Rolling 4 wheel
- Forklifts
- Sand and Shot Blasting
- Quenching Furnaces
- Tempering Furnaces
- Hanging Grinders
- Sand Mixtures
- Pneumatic Rammers
- Sand Crushers
- Induction Furnaces
- **And Many More**



BACKHOE BUCKETS

- ❖ The design of an excavator backhoe bucket includes a hinged jaw that allows it to scoop and lift materials efficiently. The bucket is attached to the end of the excavator or backhoe arm, and its functionality is essential for tasks such as digging trenches, grading, excavating, and loading materials into trucks.
- ✓ We manufacture a diverse range of backhoe buckets, spanning from **0.12 cubic meters to 8.0 cubic meters**, catering to various machine sizes.
- ✓ With an extensive library of over **350 bucket drawings**, we fulfill orders based on specific models and sizes.
- ✓ In instances where a required bucket falls outside our existing drawings, our team excels in obtaining precise drawings, even on-site or in mining locations, ensuring a **fitment guarantee**.
- ✓ Our commitment extends to providing customer-customized buckets with **enhanced strength, durability, reduced weight**, trenching capabilities, and application-specific designs.
- ✓ Choose us for solutions that prioritize reliability, and optimal performance in every backhoe bucket we manufacture.



FEATURES

- ✓ We use **Hardox grade** cutting edge in bucket as per drawing requirement.
- ✓ Our hard-facing has **65 Rockwell** hardness which provides more durability to the bucket as base plate does not wear/tear till the hard-facing life.
- ✓ We use Steel Bar on side plate edge for extra safety.
- ✓ **Center shrouds** between adapters provide extra strength to the Lip Plate.
- ✓ We provide **welded side cutters**.
- ✓ **T strips** in bucket provide more durability for Bottom plate.
- ✓ **Diamond Chromium Wear Plates** are welded in the bottom. These wear plates are highly durable as they contain chromium and manganese. These are usually 100x100mm



Welded Side Cutters



Chromium Wear Plates



Centre and Heel Shrouds



Hard-Facing

SHOVEL BUCKETS

- ❖ Key features of an excavator shovel bucket include a curved or concave shape, which aids in efficient digging and scooping of materials. The design typically includes teeth or cutting edges at the front edge of the bucket to facilitate breaking into and lifting various types of surfaces.
- ✓ Catering primarily to cement plants and limestone loading operations in India, our shovel buckets are indispensable for **heavy-duty material handling**.
- ✓ Crafted for machines ranging from **60 tons to 120 tons**, our shovel buckets are engineered to excel in challenging environments.
- ✓ In response to industry demands, we are actively developing shovel buckets for renowned models, including Komatsu **PC1250**, TATA Hitachi **EX1200**, and BEML **1000**, with a track record of repeat orders from satisfied clients.
- ✓ Our shovel buckets have exceptional durability, enveloped in wear and tear protection. Utilizing high-grade materials such as **Hardox 400** and **Hardox 500**, we not only safeguard the base metal but also extend its lifespan.



LOADER BUCKETS

- ❖ Key features of an excavator loader bucket include a wide, shallow design that facilitates efficient loading and lifting of materials. Unlike digging buckets, loader buckets typically have a flatter bottom to enhance the scooping and carrying of loose materials. Additionally, loader buckets often have a larger capacity compared to digging buckets to optimize the loading process.
- ✓ **Efficiently load and transport various materials** with our loader buckets. The wide, shallow design ensures optimal capacity for diverse applications.
- ✓ Tailored for efficiency, our loader buckets offer customization options, ensuring **seamless integration and enhanced performance** with your excavator.
- ✓ Catering to construction, agriculture, quarrying, and more, our loader buckets, with capacities for **various machine sizes**, guarantee reliability across diverse applications.
- ✓ Built for durability, our loader buckets withstand **heavy-duty material handling**, featuring high-quality materials and precision engineering for extended longevity.



LHD BUCKETS

- ❖ Key features of an LHD excavator bucket include its design for optimal scooping and loading of materials, often with a higher capacity than standard buckets. The bucket is part of the LHD machine's system, which typically includes a front bucket for loading, a hauling mechanism, and a dumping system. LHDs are well-suited for confined spaces in underground mining environments, where efficient and precise material handling is crucial.
- ✓ Specialized for underground mines, our Load-Haul-Dump (LHD) buckets are tailored for optimal performance. We manufacture a comprehensive range, including models from **Sandvik, Atlas Copco, and ESCO**.
- ✓ Notable clients, such as Hindustan Zinc Limited, HCL Khetri, and Hatti Gold Mines, have **trusted our LHD buckets** for their material handling needs.
- ✓ We've successfully developed **shrouds** for Sandvik LHDs, established a partnership with ESCO for shroud supply, and customized LHD buckets based on specific client requests.
- ✓ **Choose reliability and precision** for your underground mining operations with our diverse and proven range of LHD buckets.



UNIQUE MANUFACTURING

- ✓ Explore **seamless contract manufacturing** services covering the entire spectrum of excavator and skid steer attachments. From concept to completion, we bring your ideas to life with precision engineering, ensuring a comprehensive and hassle-free manufacturing process.
- ✓ Our manufacturing goes beyond production – it's a **partnership** to create attachments like brush cutters, pallet forks, and more, uniquely branded to reflect your identity.
- ✓ Join forces with **our in-house experts** in a collaborative innovation hub.
- ✓ Beyond manufacturing, we work **hand-in-hand with you** to enhance attachment designs and optimize functionalities of every product.
- ✓ Experience our manufacturing with a commitment to **timely delivery and unwavering quality**.



BLOCK HANDLING BUCKETS



RECLAIMER BUCKETS



NET/SKELETON BUCKETS



SIDE DUMP LOADER



CLAMSHELL BUCKETS



RIPPER TOOTH



GROUND ENGAGING TOOLS (G.E.T.s)

- ✓ Ground Engaging Tools are **adapters, teeth, lock pins, washers, side cutters, heel shrouds and center shrouds.**
- ✓ We usually manufacture/cast Excavator GETs from **2 Kg to 165 Kg.**
(Hardness 32 – 50 HRC as per requirement)
- ✓ We provide these tools with **high quality assurance.**

We provide Ground Engaging Tools for:

- ❖ SANDVIK
- ❖ KOMATSU
- ❖ TATA HITACHI
- ❖ CAT

- ❖ KOBELCO
- ❖ VOLVO
- ❖ DOOSAN
- ❖ HYUNDAI

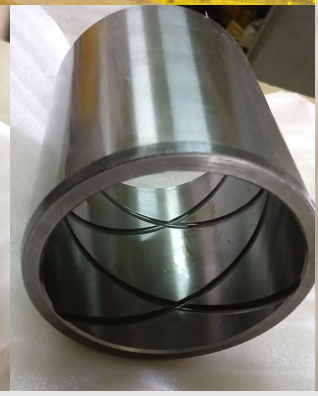
- ❖ JCB
- ❖ SANY



UNIQUE PINS AND BUSHES

- ❖ Since 2017, we are manufacturing pins and bushes with the focus on **quality** and **durability**.
- ❖ To get the reliable performance, we have **all facilities in-house** for each and every process.
- ❖ We take pride in our achievement of producing pins with diameters of **up to 220mm**.
- ❖ Our pins and bushes adhere to the **OEM standards**, ensuring that our products meet and even exceed the quality and specifications set by industry leaders.
- ❖ We provide **Hard Chrome Plating** and **TDC Plating** for smooth, hard and wear resistant surface.
- ❖ **Complete kits** (pins and bushes) of excavator machines are available.





PROCESSES

PINS AND BUSHES

❖ CUTTING

❖ CENTERING & FACING

❖ TURNING

❖ DRILLING

❖ HARDENING

❖ GRINDING

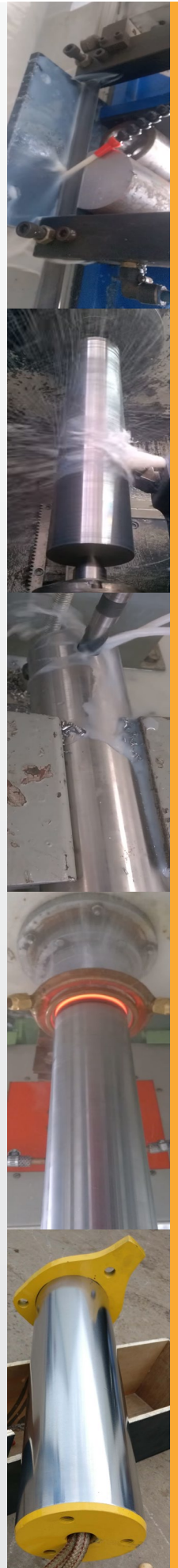
❖ ELECTROPLATING

❖ BAKING

❖ POLISHING / BUFFING

❖ PACKING

❖ QUALITY ASSURANCE



UNIQUE PLATING SOLUTIONS



Hard Chrome Plating

- Hard Chrome Plating is the **most used** electroplating solution for high wear resistance and durability.
- Hardness of the Hard Chrome Plating is **50-62 HRC**.
- Its thickness is from **0.02 mm to 0.130 mm**.
- Its surface finish is **0.4 – 0.6 μm Ra**.
- Hard Chrome Finish is **Shiny and Bright**.

MORE SOLUTIONS

Zinc Plating
Nickel Plating
Black Oxide

Phosphate Coating
Electroless Nickel Plating
E-Coating

Thin Dense Chrome Plating



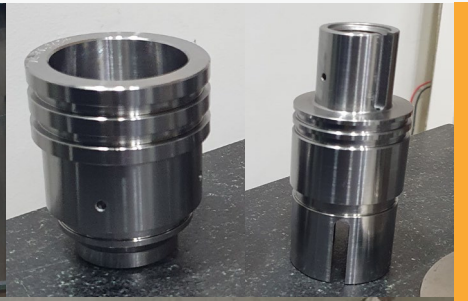
- Thin Dense Chrome Plating is the **state-of-the-art** technology in electroplating for wear and corrosion resistance . We are the first company in India to offer TDC Plating. TDC Plating is generally used in aerospace and military.
- Hardness of the Hard Chrome Plating is **70-74 HRC**.
- Its thickness is from **0.005 mm to 0.015 mm**.
- Its surface finish is **0.09 – 0.18 μm Ra**.
- Hard Chrome Finish is **Satin or Matte**.

UNIQUE

FABRICATION | KITTING

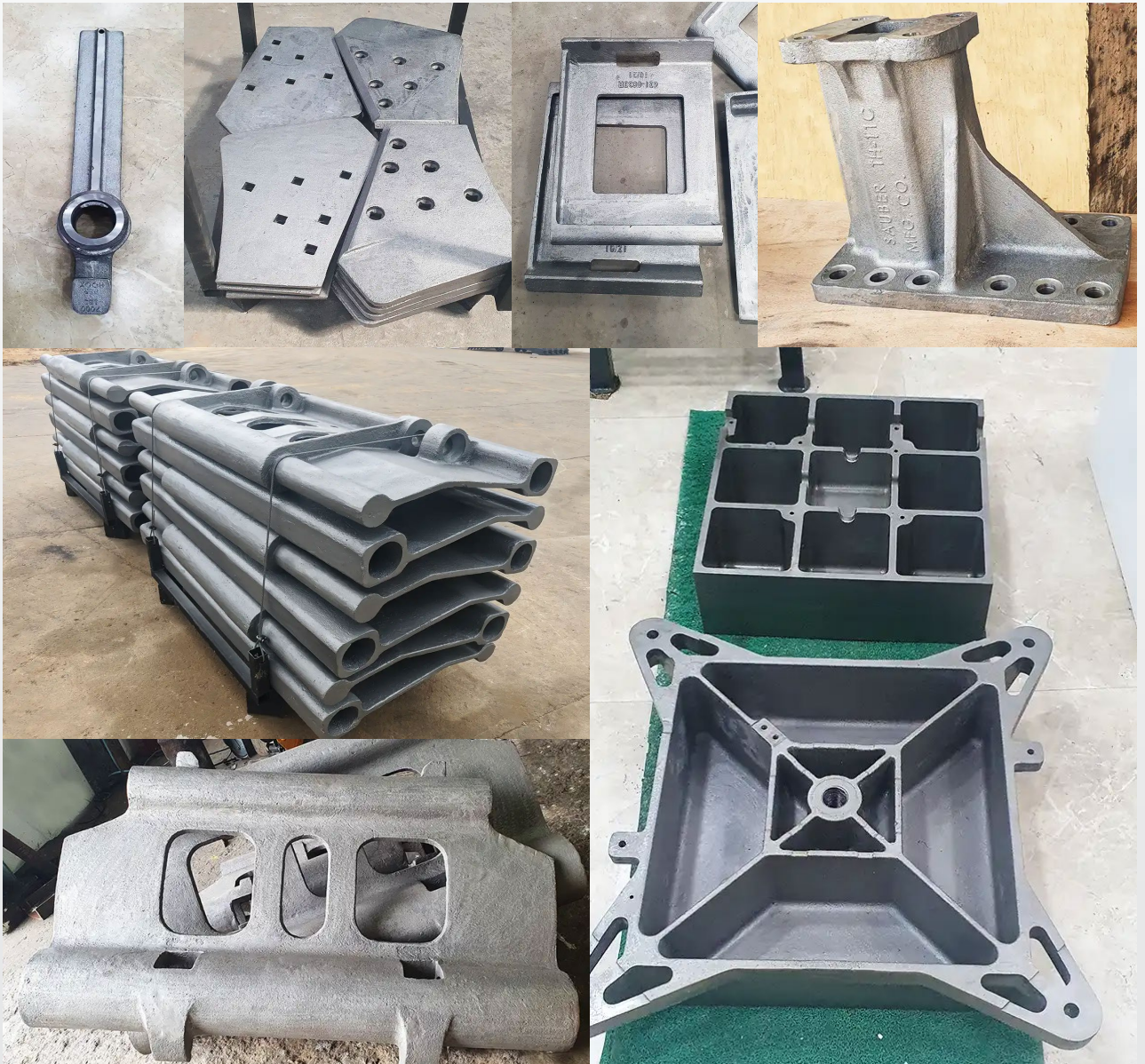
- ✓ We can provide you with kitted and assembled components boosting **your efficiency and productivity** of your entire production line.
- ✓ Kitting helps in **reducing maintenance and labor costs**.
- ✓ We have every **facility in-house** for your fabrication requirements which ensure **Reliable Quality**.





UNIQUE CASTINGS

- ✓ Our foundry has advanced equipment, experienced engineers, and skilled workers, all of these make us a **reliable manufacturer** in steel and iron castings.
- ✓ Combined with **CAE simulation software**, our experienced engineers can work together with our pattern shop to manufacture the precise pattern tooling.
- ✓ Sand molding, melting, knockout, melting, pouring, heat treatment (Normalize, Quench, Temper), and gauging processes all are **in-house**.
- ✓ Our foundry has all the necessary **inspection/testing equipment** includes mechanical tensile strength testing, impact Charpy test, hardness test, NDT test (UT, MPI, DP).



PATTERNMAKING

- ✓ Our in-house patternmaking facilities include casting, machining, and woodworking shops, offering various pattern types like Loose, Split, Shell, Sweep, and Match plates. We use materials such as Tool Steel, Aluminium, SGI, Wood, Fiber, and Styrofoam for precision and efficiency in our processes.

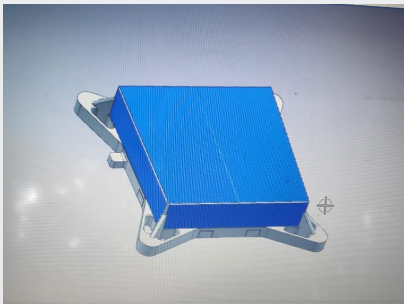
Material

- Tool Steel
- Aluminium
- SGI
- Wood
- Fiber
- Styrofoam



Types

- Loose
- Split
- Shell
- Sweep
- Match plates



MOLDING (SAND AND SHELL)

- Our Capability range is from **1 Kg to 700 Kg** castings. We have different molding capabilities as per suitable production efficiency of the casted product.
 - ✓ CO2 Sodium Silicate Molding
 - ✓ No-Bake molds
 - ✓ Green Sand Molding
 - ✓ Shell Molding



MELTING, POURING AND KNOCKOUT

- We provide castings in **Carbon Steel** Grades and **Ductile Iron** Grades.
- Experienced engineers and skilled workers are available to provide **defect free high-quality castings**.



ABRASIVE BLASTING

- ✓ Automatic Shot Blasting
- ✓ Manual Shot Blasting
- ✓ Manual Sand Blasting



HEAT TREATMENT

- ✓ Annealing
- ✓ Normalizing
- ✓ Quenching
- ✓ Tempering
- ✓ Induction Hardening



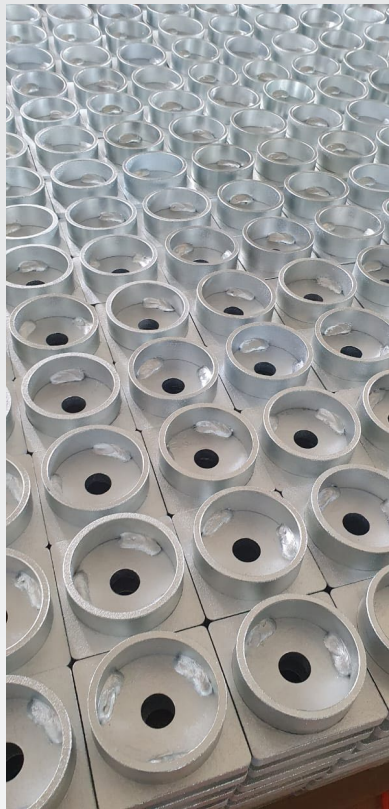
UNIQUE POST-PROCESSING

- We have complete electroplating solution in-house which ensures our customer with high quality protective coatings on the parts as required.

- ✓ Zinc Plating
- ✓ Nickel Plating
- ✓ Electroless Nickel Plating
- ✓ Manganese Coating

- ✓ Phosphate Coating
- ✓ Hard Chrome Plating
- ✓ Thin Dense Chrome Plating
- ✓ Blackening

- ✓ Hot Dip Galvanizing
- ✓ E-Coating
- ✓ Powder Coating
- ✓ Painting

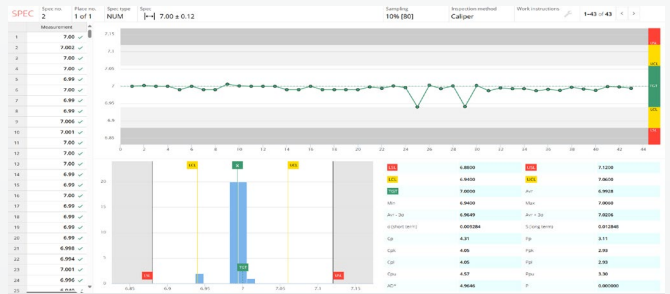
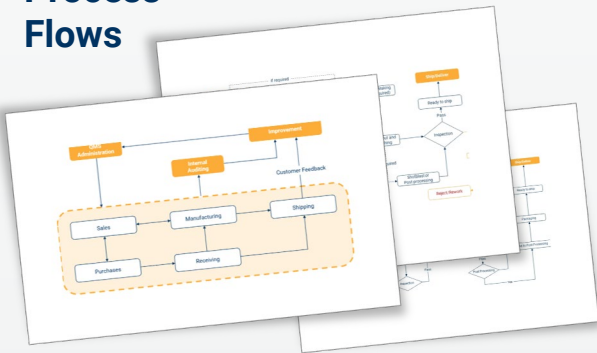


UNIQUE QUALITY ASSURANCE

- Our Company is **ISO 9001:2015** certified.
- All the measuring instruments are available for complete quality assurance of the product meeting customer requirements.

❖ We can **implement** customer-specific process flows in our production streamline to satisfy their needs of quality and control.

Process Flows




Statistical Process Control

FAIs, In-process and Final Reports

PFMEAs and Control Plans

ISO 9001:2015

Certificate of Registration



This is to Certify That The Quality Management System of

UNIQUE PERFECT PRODUCTIONS PRIVATE LIMITED

JASRANA, POST - ROOPPURA, KUCHAMAN CITY, NAGAU, RAJASTHAN - 341508, INDIA.




has been audited and conformed to be in accordance with the requirements of

ISO 9001:2015

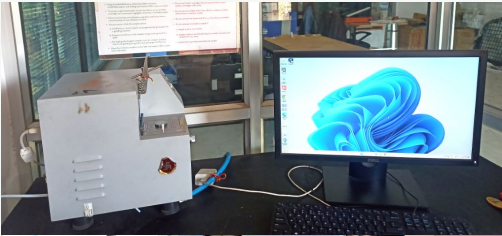
The Quality Management System is Applicable to :

MANUFACTURING OF VARIOUS TYPE OF EXCAVATOR'S ATTACHMENTS, BUCKETS, PINS, BUSHES AND G.E.T.

Certificate No : **QCR27222**
 Initial Registration Date : 18/02/2022 Issuance Date : 18/02/2022
 Date of Expiry : 17/02/2025
 1st Surve. Due : 18/01/2023 2nd Surve. Due : 18/01/2024

Ambitious Assessment Pvt. Ltd.
 D-9, Sector 03, Noida, Gautam Buddha Nagar, Uttar Pradesh - 201301, India.
 e-mail: info@apcertification.in, website: www.apcertification.in
 Certificate Verifications: Certificate Validity can be re-checked at www.apcertification.in
 This certificate is a property of Ambitious Assessment Pvt. Ltd. and shall be returned immediately when demanded
 *Validity of the certificate is subject to successful completion of surveillance audit on or before due date



CUSTOM HEAVY DUTY FABRICS

DUMPER BODIES



MINING DOORS (VENTILATION)





THANK YOU



PVT LTD

UNIQUE PERFECT PRODUCTIONS

Kuchaman City, Rajasthan, India - 341508

info@uniquebuckets.com

+91 9413 365 071

+91 9887 086 046

Let's connect